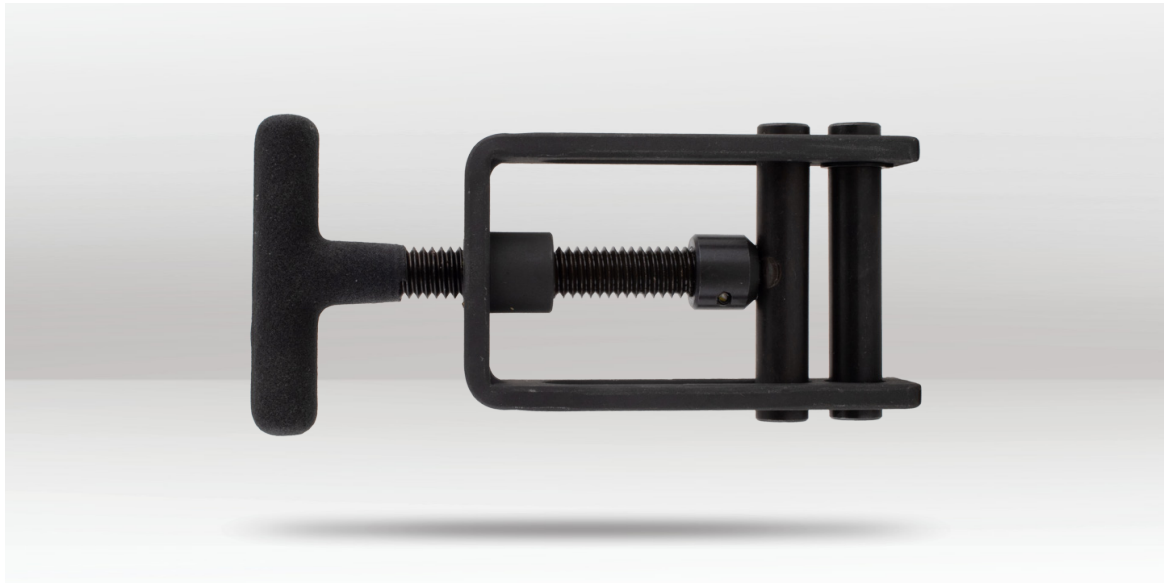


PRODUCT INFO

SHUT-OFF TOOL

PT8004



DESCRIPTION

The Plumtool Shut-Off Tool is designed for temporarily stopping the flow of water or other liquids in polyethylene (PE) pipes up to 25mm. Ideal for emergency repairs or maintenance, it is especially useful when access to main valves are limited or unavailable. The tool shuts off flow without damaging the pipe—once pressure is released, the pipe returns to its original shape. Its jaws open to a maximum of 37mm, making it compatible with standard 25mm PE water service tubing commonly used in residential and commercial plumbing.

FEATURES

- Suitable for shutting off Poly (PE) pipe up to 25mm.
- Ideal for emergency repairs or maintenance.
- No damage to pipe – returns to original shape after use.
- Jaws open to a maximum of 37mm.
- Quickly stops the flow of water.



BARCODE: 9348099002491

SUITS: Up to Ø25mm

PIPE: Polyethylene (PE)

JAW CAPACITY: 4mm-37mm

DIMENSIONS: 155 x 70 x 25mm

WEIGHT: 495g