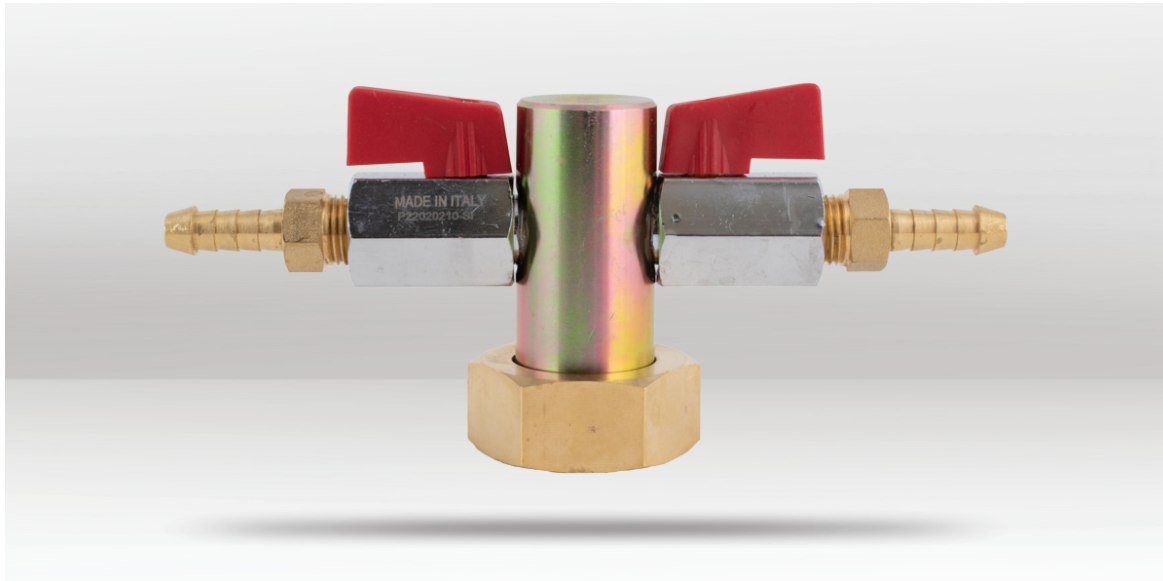


PRODUCT INFO

MANOMETER TEST TEE

PT1744



DESCRIPTION

The Plumtest Manometer Test Tee is designed for use with standard manometers to pressure test gas fitting lines efficiently and safely. It features high-quality Italian-made ball valves and includes three ports - one for the gas line, one for a pressure gauge, and one for a pressure source such as a pump. This test tee ensures secure and accurate testing and also serves as a replacement part for the Plumtest Digital Manometer Kit (PT4512), making it a versatile and essential tool for gas installers.

FEATURES

- Suitable for standard manometers.
- Used for pressure testing gas fitting lines.
- Features high-quality Italian-made ball valves.
- Use in conjunction with a manometer and hand bellows.
- Replacement part for Plumtest Digital Manometer Kit (PT4512).

BARCODE: 9348099001166

THREAD: 1" Female BSP

HEIGHT: 70mm

WIDTH: 150mm

HEX NUT: 38mm

CONNECTOR TYPE: 5/16" Barb Fitting

WEIGHT: 425g