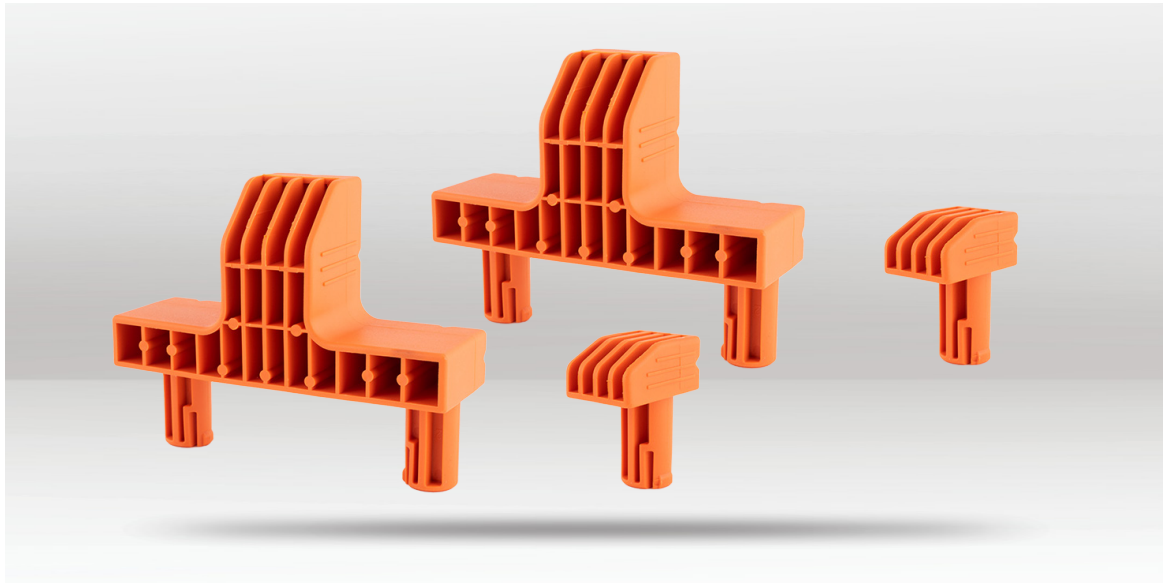


PRODUCT INFO

# BENCH DOGS KIT

## AJP60301



### DESCRIPTION

The Pony 4pc Clamping Bench Dogs Kit includes two large and two small bench dogs, designed specifically to fit 3/4" holes on the AJP60 Pony Clamping Worktable. Made from strong, durable nylon in a high-visibility orange, these bench dogs can be fastened directly to the table surface to securely hold your workpiece in place during clamping tasks. They help increase both accuracy and efficiency while working. Versatile and reliable, this kit is an ideal accessory for woodworking projects, offering enhanced stability and support on your workbench.

### FEATURES

- Includes 2 large and 2 small bench dogs.
- Suits the AJP60 Pony Clamping Worktable.
- Strong, durable nylon construction in bright orange.
- Holds workpieces securely in place for clamping tasks.
- Improves accuracy and efficiency.
- No tools needed - fits directly into 3/4" holes on the benchtop.

### FOR USE WITH

AJP60 Clamping Worktable



**BARCODE:** 044295603010

**PIN DIAMETER:** 3/4" (19mm)

**PIN LENGTH:** 1 3/8" (35mm)

**LARGE BENCH DOG (LxHxD):**

130mm x 107mm x 40mm

**SMALL BENCH DOG (LxHxD):**

30mm x 55mm x 40mm

**COLOUR:** Orange

**QUANTITY:** 4 Piece

**WEIGHT (IN PACKAGING):** 340g